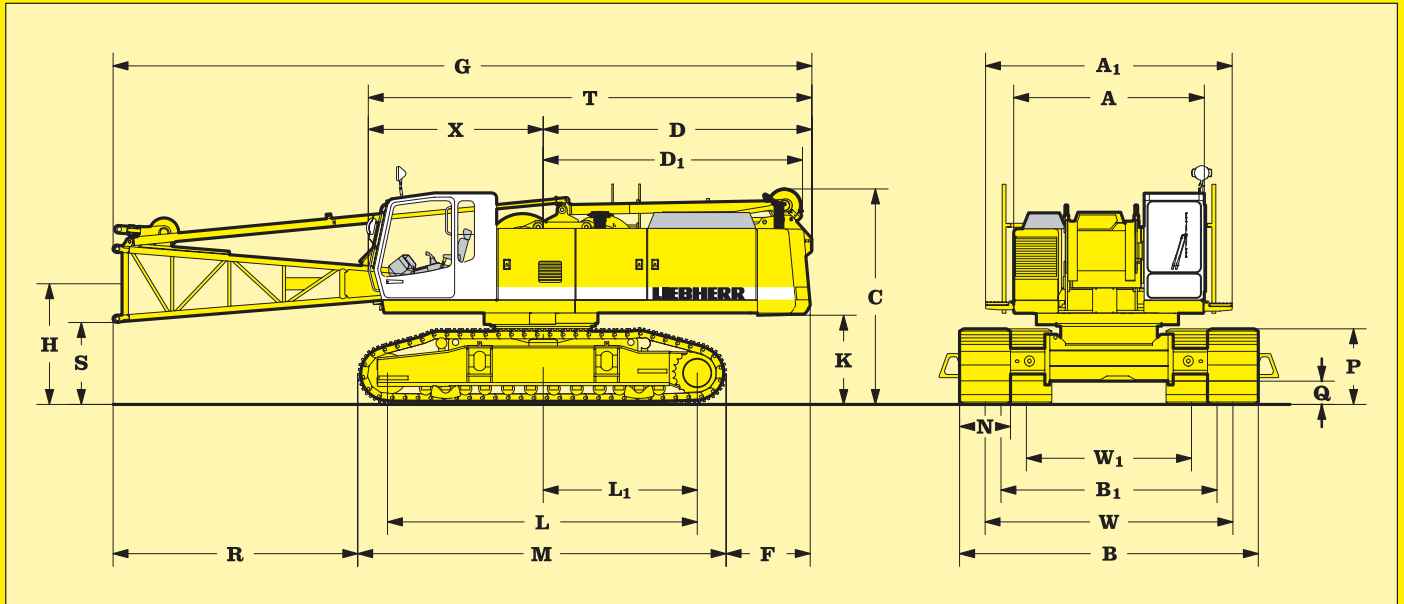


Technical Data Hydraulic crawler crane

HS 843 HD

Litronic®

Basic machine with undercarriage



Dimensions

mm

mm

A	Width of superstructure	3000	X	Distance from centre of rotation to end of cab	2750
A ₁	Width of superstructure with walk way	3440	N	Width of track shoes	700 800 900 1000
C	Height of basic machine	3250	W ₁	Track width retracted	2400 2400 2600 2600
D	Tail reach	4230	W	Track width extended	3850 3850 3850 3850
	Tail swing radius	4260	B	Crawler width extended	4550 4650 4750 4850
D ₁	Tail reach A-frame	4070	B ₁	Crawler width retracted	3500 3500 3700 3700
F	Distance between rear end of crawler and outside of counterweight	1320	Operating Weight and Ground Pressure		
G	Overall length of superstructure with lowered A-frame	11000	The operating weights include the basic unit with B6 crawler tracks, 2 main winches 20 t and 11 m boom, consisting of A-frame, boom foot (5.5 m), boom head (5.5 m) and 12.3 t counterweight.		
H	Ground clearance of boom foot pivot	1740	All systems are ready.		
K	Ground clearance of superstructure	1240	with 700 mm flat track shoes 55.0 t - 0.80 kg/cm ²		
L	Wheel base (centre idler to centre tumbler)	4800	with 800 mm flat track shoes 55.6 t - 0.71 kg/cm ²		
L ₁	Distance from centre of rotation to centre of tumbler	2400	with 900 mm flat track shoes 56.2 t - 0.64 kg/cm ²		
M	Length of crawlers	5760	with 1000 mm flat track shoes 56.8 t - 0.58 kg/cm ²		
P	Height of crawlers	1040	with 700 mm 3-web shoes 53.0 t - 0.77 kg/cm ²		
Q	Ground clearance of crawler	375	with 800 mm 3-web shoes 53.5 t - 0.68 kg/cm ²		
R	Distance from edge of horizontal boom foot to crawler	3900	with 900 mm 3-web shoes 54.0 t - 0.61 kg/cm ²		
S	Ground clearance of horizontal boom foot	1130	with 1000 mm 3-web shoes 54.5 t - 0.55 kg/cm ²		
T	Length of superstructure	6980			

LEIBHERR

The Better Machine